



FemTouch

Free to be me



FemTouch™ on AcuPulse™

A revolutionary solution
for women's health

Make life's journey the best it can be

The body is the soul's partner on life's journey. At any stage on that journey, if something makes one unhappy, the other will feel the same. Especially if that area of the body is the most intimate and personal.

Nature, childbirth, just the journey itself, these can all affect your patients where they are at their most sensitive.

FemTouch is an innovative, non-invasive laser treatment, and relieves a wide range of issues as well as renewing the heart of a woman's being.

FemTouch restores not just health but confidence.
Your patients can go forward, live life to the fullest, embrace everything it has to offer.

FemTouch **Free to be me.**

*"After just one treatment
I already felt young again. I had no
idea the treatment would be that
fast and totally comfortable.
It changed my life."*

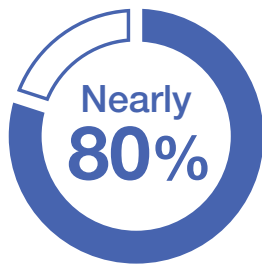
Emily, FemTouch patient



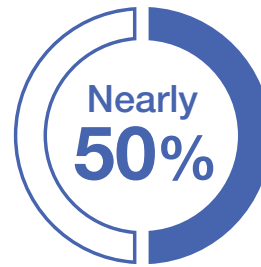
A new future for patients. And for you.

FemTouch is an out-patient, non-invasive, and non-hormonal treatment for improved vaginal health, restoring patient confidence and wellbeing.

FemTouch positions you at the forefront of women's health technology, while expanding your practice offer.



Of postmenopausal women suffer from Vaginal Atrophy



Suffer from Stress Urinary Incontinence



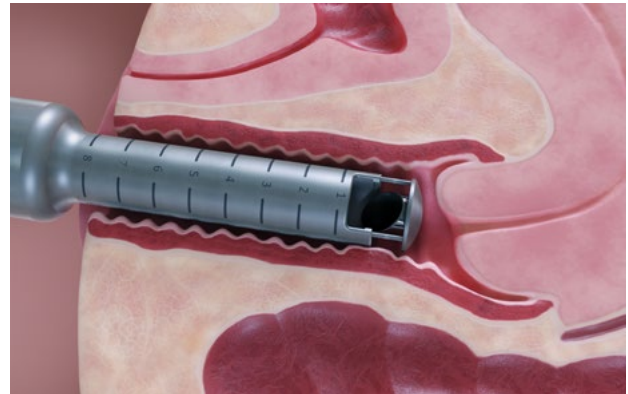
"I am excited to add FemTouch™ treatment to my practice as this comfortable and easy procedure was demonstrating high satisfaction with my patients. This technology leads to good clinical outcomes"

**Dr. Massimiliano Marziali,
GYN, Rome, Italy**

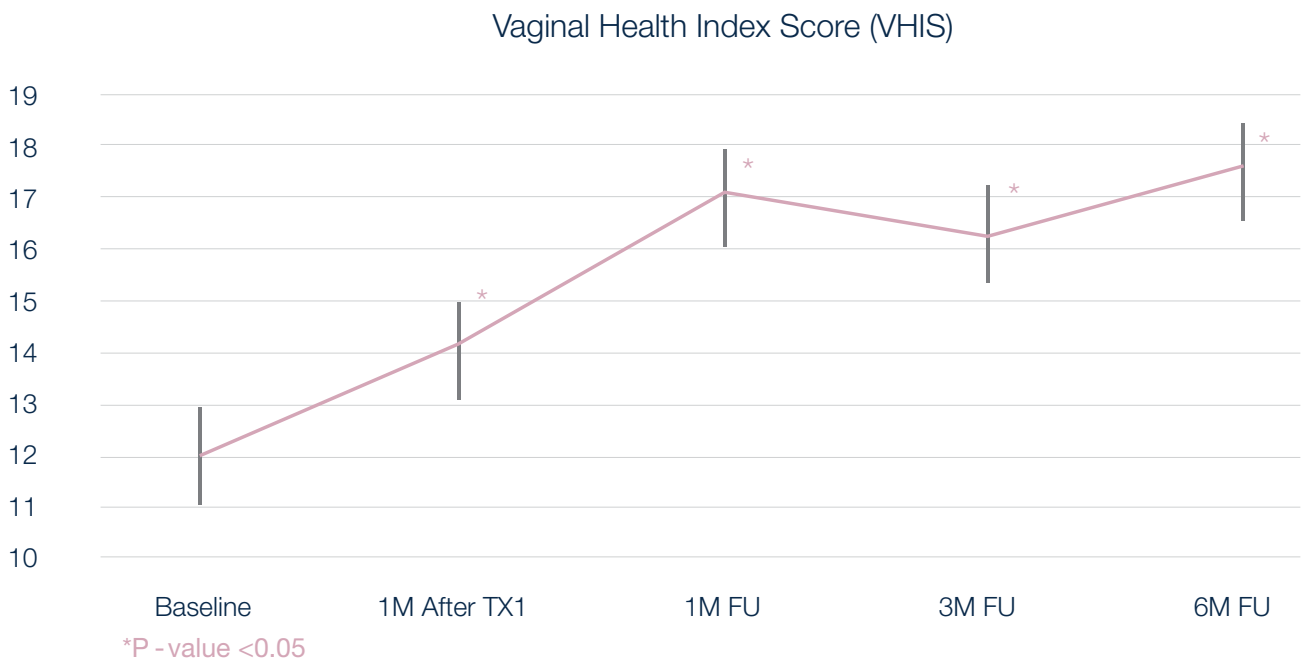
How does FemTouch work?

FemTouch addresses vaginal health related conditions by promoting the remodeling of the vaginal mucous epithelium layer.

The Fractional CO₂ laser is applied along the vaginal wall, resulting in gently controlled ablation and coagulation of the vaginal lining.



Long lasting results



* Scott Evan Eder, M. Early effect of fractional CO₂ laser treatment in Post-menopausal women with vaginal atrophy. *Laser Therapy* 27.1: 41-47, 2018

Significant improvement in VHIS.

A change was noticed from the first treatment and improvement continued throughout treatment series. Results were sustained over a 6 month follow up period.

Treatment benefits for your patient. For your clinic.



FAST

The procedure only takes minutes



SIMPLE

No anesthesia or special post procedure care are required



EFFICIENT

Noticeable results from the first treatment



PRECISE

Full control of ablation and coagulation depth



Customized solution for your patient's needs

FemTouch tips provide you with complete flexibility, not only to customize treatment achieving maximum patient satisfaction but also to select the right fit for your treatment method and business needs.

Fine vs. Standard Tip

The Standard tips are suitable for most patients. Their size enables stretching of the vaginal wall for optimal scanning. Fine tips are suitable for patients with severe cases of discomfort or other cases where the Standard tip standard size is not applicable.

Focus vs. Panoramic Tip

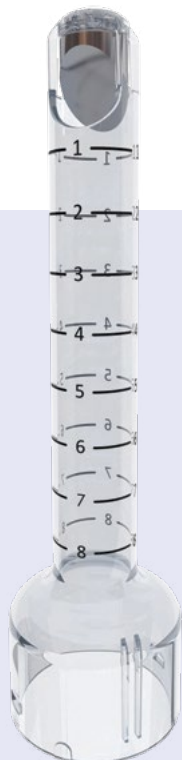
The Focus tips enable the physician to deliver laser energy in a more selective manner to the vaginal walls, while the Panoramic tips enables a faster 360° treatment.

Reusable vs. Disposable

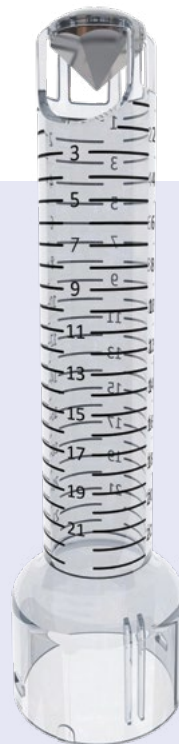
Disposable tips enable quick turnover between patients while the reusable tips have a cost advantage for both the patient and the provider.



Standard Focus



Fine Focus



Standard Panoramic



Fine Panoramic

Your journey with Lumenis has just begun

We want your business to grow with FemTouch. That's why we have put together a support package that begins with the first conversation and will stay with you as your business begins to see the benefits. We provide a support package which ensures that you have all the training you need and receive the most up to date clinical materials.



Lumenis Practice Locator

Thousands of patients search for treatment providers every month. Help them find your clinic by registering your practice on the Lumenis Practice Locator. We run campaigns through influencers, social media and viral videos to promote this directory.



Lumenis online

Consumers have many questions about aesthetic. Our patient-facing websites will give them the re-assurance and confidence they need to move forward with the treatments.



Team Training

We install the system and train your staff, so that you are able to assess skin types and conditions, creating the perfect treatment plan for each individual patient. Our expert clinical training means they will handle consultations and treatments with confidence.



Your Most Valuable Resource

Your dedicated representative is an email, text, or phone call away. We want you to feel part of the Lumenis family, so please feel free to contact us any time. We'll always do our best to get back to you within 24 hours.



Brand Your Clinic

As a Lumenis client you will have access to the Lumenis Physician Portal. Here, you can find materials such as brochures and posters. You will also have access to a wealth of clinical and product information.



Extensive Service Network

We are committed to providing high quality, comprehensive service for medical equipment repair and maintenance. Lumenis service provides you with peace of mind, so you can focus on patient care, rather than on the equipment.

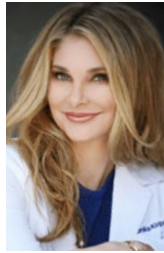
Specifications

Laser source	CO ₂
Wavelength	10,600 nm
Power mode	Continuous Wave (CW)
Laser delivery	Fractional
Pulse mode	Single, Repeat
Energy	7.5-12.5mJ
Density	3-25%
Compatible with	All AcuPulse™ and AcuPulse™ DUO models (except 40 WG)



"So little effort for such a positive patient response. My menopause patients are so thankful for helping them!"

Scott Evan Eder ,M.S., M.D. F.A.C.O.G,
F.A.C.S.Center for Women's Health
& Wellness, New Jersey US



"Not only is the procedure fast and relatively painless, but it also has yielded such phenomenal results in terms of patient satisfaction that I stand confident recommending it to my patients"

Monika G. Kiripolsky, MD, FAAD, FAACS
Board-Certified Dermatologist
Fellowship-Trained Cosmetic & Laser Surgeon US

Warnings and Risks: CO₂ lasers are intended solely for use by physicians trained in the use of the Carbon Dioxide laser (10.6 μm) wavelength. Incorrect treatment settings or misuse of the technology can present risk of serious injury to patient and operating personnel. Risks that may be associated with any CO₂ laser procedure may include change of pigmentation, infection, erythema, skin induration or scarring. Read and understand the CO₂ systems and accessories operator manuals for a complete list of intended use, contraindications and risks. The use of Lumenis® CO₂ laser is contraindicated where a patient has taken Accutane® (Isotretinoin) within the past 6-12 months, has a history of keloid formation and demonstrate excessive or unusually prolonged erythema.

 **Lumenis (Germany) GmbH**
Heinrich-Hertz-Str 3
D-63303 Dreieich-
Dreieichenhain
GERMANY
T: +49 (0) 6103 8335 0

EMEA
Roma (RM), Italy
T: +39 06 90 75 230
F: +39 06 90 75 269
Hertfordshire, UK
T: +44 20 8736 4110
F: +44 20 8736 4119

JAPAN
Tokyo, Japan
T: +81 3 6743 8300
F: +81 3 6743 8301

AMERICAS
San Jose, CA, USA
T: +1 408 764 3000
+1 877 586 3647
F: +1 408 764 3999

ASIA / PACIFIC
Beijing, China
T +86 10 5737 6677
Gurgaon, India
T +91 124 422 07 95
Kowloon, Hong Kong
T +852 217 428 00
F +852 272 251 51



Rx ONLY

© 2020 Lumenis, all rights reserved